



NEW LOCATION:
Waterville Elks Club #905
76 Industrial Street | Waterville

Festival Dates & Hours:

November 17th Friday from 10 a.m. – 7 p.m.
November 18th Saturday from 10 a.m. – 7 p.m.
November 19th Sunday from 10 a.m. – 5 p.m.
November 24th Friday from 10 a.m. – 7 p.m.
November 25th Saturday from 10 a.m. – 7 p.m.
November 26th Sunday from 10 a.m. – 4 p.m.

*Drawing for Tree Winners begins on Sunday,
November 26th at 5 p.m.
www.festivaloftreesmaine.net*

Join the fun and sponsor a tree

It's time again for this year's Festival of Trees! A fabulous fun holiday event, with all funds raised to support our community members experiencing food insecurity through services at the Alford Youth & Community Center, and those in need of workforce development through services provided by the Mid-Maine Chamber of Commerce!

Sponsor a Tree: If your business would like to sponsor a tree you can go to www.clubaycc.org/festival-of-trees and register your tree or email Felicia Lambert at flambert@clubaycc.org.

Trees must meet the following requirements: Artificial Tree 5 ft tall at minimum. Use LED lights only and include skirting that covers the tree stand. Set up dates are Tuesday and Wednesday this year, November 14 and 15 from 12 to 7 p.m. Sponsor appreciation event on Thursday, November 16 at 5 p.m.

Volunteer: The Festival has over 400 volunteer slots to fill, many 3 hours at a time. We would be thrilled if your employees or associates would like to volunteer individually or as a group.

For more information go to www.clubaycc.org/festival-of-trees and sign up to volunteer, or email Maddie Rock mrock@clubaycc.org. Thank you so much for supporting this year's event and worthy causes!

50 ELM STREET, WATERVILLE, ME 04901
TEL: (207) 873-3315 • FAX: (207) 877-0087
kimberly@midmainechamber.com
www.midmainechamber.com
Michelle Joler-Labbe, chair of the board
Kimberly N. Lindlof, president & CEO

WHAT'S INSIDE:

People News | Member News | Events Calendar | New Members
Events: Ribbon Cuttings | Business Breakfast

Member Spotlight: Sheridan Construction

NOVEMBER EVENTS

Business Breakfast



The Nature of Conflict: Conflict Resolution in the Workplace

Thursday, November 2, 7:15-9 a.m.

Best Western Plus, 375 Main St., Waterville

Terri Swanson of Swanson Consulting & Associates, LLC will discuss conflicts in organizations, recognizing that conflict in and of itself is not a bad thing. It is the diversity which people bring to the situation that affects the outcome.

Registration- \$23 for members; \$29 non-members and at the door.

Register today by emailing cindy@midmainechamber.com or call 873-3315.

OCTOBER RIBBON CUTTINGS



Congratulations Coastal Med Tech and Staff on their new location.
Ribbon Cutting was held on Wed. Oct. 4th at their new location at 177 College Ave. in Waterville.



Congratulations to Baking by Danielle at their Grand Opening.
Ribbon Cutting was held on Wed. Oct. 18th at their new location at 33 Temple St. in Waterville.

NOVEMBER MID-MAINE CHAMBER CALENDAR

Thurs., Nov. 2	7:15 a.m.	Business Breakfast Series
Mon., Nov. 6	8:30 a.m.	KV Connect Steering Committee
Wed., Nov. 15	8:00 a.m.	Executive Committee
Fri., Nov. 17	8:00 a.m.	Public Policy
Nov. 23 & 24	HOLIDAY	OFFICE CLOSED
Wed., Nov. 29	7:30 a.m.	Marketing & Membership
Thurs., Nov. 30	3:30 p.m.	Board of Directors

There is no Business After Hours in November.

NOVEMBER RIBBON CUTTINGS

Thurs. Nov. 9 at 3 p.m., LAKESIDE STORAGE
38 Summer St., Oakland

Tues. Nov. 14 at 2:30 p.m., METAMORPH JEWELRY STUDIO
40 Main St., Waterville

Wed. Nov. 29 at 3 p.m., DR. GILLIS MEDICAL WEIGHT LOSS MGMNT
8 Water St., Oakland



John Butera
VP Commercial Banker
207.858.2555
jbutera@skowhegansavings.com

"John Butera assisted us with navigating the Paycheck Protection Program. He is quick to return our calls and takes a personal interest in our business."
- John Goodine, Elm City Photo

I'm here for your business banking needs.



★ Highlights from the Super Raffle Dinner

★ A Night in Paris ★

Members and guests enjoyed an evening of great food, fun and games, and lots of laughs at the Super Raffle Dinner on September 28th at the Winslow VFW.



David Heidrich of Brookfield Renewables US was the \$3k winner.



Chamber members enjoy cheesing it up in the photo booth.

★
Special thanks to our sponsor
Maine State Credit Union

Welcome New Members

Dr. Gillis Medical Weight Loss Management

Brian Gillis
8 Water Street
Oakland, ME 04936
Centralmewm@gmail.com
207-465-5475

Peak Aesthetics

Stephanie McPherson
325 C KMD
Waterville, ME 04901
Stephmcpherson24@gmail.com
207-649-4370

Clinton Lions Club

Robert Hartley
251 Mutton Lane
Clinton, ME 04927
bhartley@myfairpoint.net
207-426-8567

Learn about the benefits of joining the chamber! Grow your network, participate in committees, display your business materials in our visitor center, submit news, post job openings and events. Meet new community members and expand your reach. If you would like to join the chamber please email: Jennifer@midmainechamber.com.

Waterville Police and Fire have a portal where businesses can put in an emergency contact should first responders need to reach someone during off hours.

<https://www.waterville-me.gov/fire/emergency-contact>



Food and companionship
enriching life

www.elanco.com



Serving Maine Since 1947

Sheridan Construction

Building on our promise
WWW.SHERIDANCORP.COM

Engineering
Design - Build
General Contracting
Construction Management

33 Sheridan Drive
Fairfield, Maine 04937
(207)453-9311



WAVE
Waterville Area Ventures

Supporting businesses
from idea through
accelerated growth as
Maine's first
entrepreneurial
ecosystem

watervilleareaventures.org

IN PARTNERSHIP WITH



Calendar of Events

Every Monday, 1 to 4 p.m. Career Help at the Library. A consultant from the CareerCenter will be at the Waterville Public Library every Monday to assist with your job search needs. FMI: librarian@watervillelibrary.org or call 207-872-5433.

Thursdays, 7 - 7:30 p.m. Book Bites! (Facebook Read-A-Loud) Waterville Public Library. Each week Mrs. Liz will read an excerpt from one book off of the New Chapter Books shelves. See the video on FMI: Call 207-872-5433, or email librarian@watervillelibrary.org, or go to watervillelibrary.org or facebook.com/watervillelibrary

Thursdays thru November, 2-6 p.m., Waterville Farmers' Market, Head of Falls, downtown Waterville. FMI: watervillefarmersmarket.org

Thursdays, 1-2 p.m. Homeschool Hub, Waterville Public Library. Homeschool students who are preschool through elementary grade levels* are invited to come to the library for fun and activities! *The Bartlett Room for Teens is available for older siblings. FMI: call 207-842-5433 or email librarian@watervillelibrary.org.

Fri. Nov. 2, Mid-Maine Chamber Business Breakfast Series—The Nature of Conflict Resolution in the Workplace with Terri Swanson. 7:15 a.m. Best Western Plus, Waterville. FMI: Cindy@midmainechamber.com

Fri. Nov. 2, Mid-Maine Chamber New Member Orientation. 3:30 p.m. Chamber Boardroom, 50 Elm St. Waterville. FMI: Cindy@midmainechamber.com

Fri. Nov. 3, Celebrate First Friday in Downtown Waterville, Main St. Waterville, Waterville Creates' First Fridays celebrate the vibrant creativity in Waterville through a wide array of arts experiences. On the first Friday of every month, visit Main Street in downtown Waterville to meet artists, see performances, listen to live music, eat delicious food, shop at local businesses, enjoy the arts, and come together as a community. FMI: watervillecreates.org.

Saturday, November 4, 6 p.m., Augusta Elks Lodge. Kennebec Behavioral Health is hosting 'A Night Out' featuring a murder mystery show with Mystery 207. FMI: www.kbhmaine.org/nightout.

Wed. Nov. 8 & 9, Maine Tax Forum, SCORE Maine. 125 Manley Rd., Auburn. FMI: scoremaine@gmail.com or 207-622-8509.

Thurs. Nov. 9, 3 p.m., Mid-Maine Chamber Ribbon Cutting. Lakeside Storage, 38 Summer St., Oakland. FMI: Mid-Maine Chamber 207-873-3341.

Sat. Nov. 11, 11 a.m., Waterville Veterans Day Parade, Main Street, Waterville. All veterans and community members are invited to participate. Lineup begins at 10 a.m. at The Elm, 21 College Ave., Waterville.

Tues. Nov. 14, 2:30 p.m., Mid-Maine Chamber Ribbon Cutting. Metamorph Jewelry Studio, 40 Main St. Waterville. FMI: Mid-Maine Chamber 207-873-3341.

Fri. Nov. 17, Music in the Museum, 12 p.m., Colby College Museum of Art, 5600 Mayflower Hill Dr., Waterville. Free event. FMI: museum.colby.edu

Fri. & Sat. Nov. 17 & 18, Festival of Trees, 10 a.m. - 7 p.m., Waterville Elks Lodge, 76 industrial Rd., Waterville. FMI: www.festivaloftreesmaine.com.

Fri. & Sat. Nov. 17 & 18, 7:30 p.m., Elf the Musical, Waterville Opera House, 1 Common St., Waterville. Presented by Waterville Creates. FMI: watervillecreates.org.

Fri. Nov. 18, Choirs at Colby, 7:30 p.m., Colby Performance Hall, 5600 Mayflower Hill Dr., Waterville. Free event. FMI: arts.colby.edu/reserve-tickets

Sat., Nov. 18, 5 p.m., Warming Up for Christmas featuring Steve Fotter with special guests Al Corey Orchestra under the direction of Brian Nadeau. Williamson Auditorium, Lawrence High

School. FMI: Eventbrite.com search for Steve Fotter or call 207-649-0722. Proceeds benefit the Waterville Police Departments Operation HOPE.

Sun. Nov. 19, Festival of Trees, 10 a.m. - 5 p.m., Waterville Elks Lodge, 76 industrial Rd., Waterville. FMI: www.festivaloftreesmaine.com.

Sun. Nov. 19, Elf the Musical, Waterville Opera House, 1 Common St., Waterville. Presented by Waterville Creates. 2 p.m. FMI: watervillecreates.org.

Fri. Nov. 24, Elf the Musical, Waterville Opera House, 1 Common St., Waterville. Presented by Waterville Creates. 7:30 p.m. FMI: watervillecreates.org.

Fri. & Sat. Nov. 24 & 25, Festival of Trees, 10 a.m. - 7 p.m., Waterville Elks Lodge, 76 industrial Rd., Waterville. FMI: www.festivaloftreesmaine.com.

Sat & Sun. Nov. 25 & 26, Elf the Musical, Waterville Opera House, 1 Common St., Waterville. Presented by Waterville Creates. 2 p.m. FMI: watervillecreates.org.

Sat. Nov. 25 thru Fri. Dec. 1, Waterville Rotary 60th Annual Auction online only at www.biddingowl.com/auctions.cfmon Proceeds with benefit important community programs such as the South End Teen Center. FMI: watervillerotary.com.

Sun. Nov. 26, Festival of Trees, 10 a.m. - 5 p.m., Waterville Elks Lodge, 76 industrial Rd., Waterville. FMI: www.festivaloftreesmaine.com.

Wed. Nov. 29, 3 p.m., Mid-Maine Chamber Ribbon Cutting. Dr. Gillis Medical Weight Loss Management, 8 Water St., Oakland. FMI: Mid-Maine Chamber 207-873-3341.

SHARE YOUR EVENTS!

Log in to our website and add them to the events calendar or email jennifer@midmainechamber.com.



The Advantages of Membership

- Low Rate Loans
- Free Checking
- Mobile Banking
- Debit Card Rewards

Connected credit union

connectedcreditunion.org
85 Civic Center Drive, Augusta
12 Monument Street, Winslow



CENTURY 21
Nason Realty, Inc.

Residential • Seasonal • Commer- 11 Bay St., Winslow,

www.c21nason.com Don't settle for average.
207-873-2119
Each Office Independently Owned & Operated



uf

Supporting the Waterville arts, culture and business community.

UNITY FOUNDATION



Downtown Waterville

Come visit us!
Every Thursday
May - November
2-6 p.m.
Rain or Shine
Riverwalk
Head of Falls
Downtown
Waterville

[downtownwatervillefm](https://facebook.com/downtownwatervillefm)
watervillefarmersmarket.org

FARMERS' MARKET

Member News

Did you know that **Mid-Maine Regional Adult & Community Education** has the largest offering of enrichment classes in the state? Classes begin at different times during the fall season.

FMI: www.midmaine.maineadulted.org.

MaineGeneral Medical Center ceremonially broke ground on its Harold Alfond Center for Cancer Care expansion project recently. Alongside staff and community supporters, cancer center leadership also recognized major contributors who have already stepped up to lead the fundraising (including **Kennebec Savings Bank**) required to complete the \$36M project. To date, \$29M has been raised towards the \$30M goal.

HealthReach Community Health Centers was recognized for excellence in obesity prevention. The sites in our region who were recognized include Belgrade Regional Health Center and the Lovejoy Health Center (of Albion).

JMG received \$10.4 million grant from the Harold Alfond Foundation. The grant allows the JMG College Success Program to support students on all public campuses in Maine.

USDA is awarding **GrowSmart Maine** a Rural Community Development Initiative grant of \$304,636. It will use the funds to offer a capacity-building program called "Building Community Strength," providing training, technical assistance, and grants to 10 rural ME communities.

MaineGeneral Health's annual Day of Hope took place Oct. 7, at the Augusta Civic Center with ~1k people attending to celebrate area cancer survivors and fighters and their caregivers.

Walk for Hope Grand Marshal and cancer survivor Bonnie Collins spoke at the inspirational opening ceremony before attendees began the 1.8-mile Walk for Hope. Over \$190k has come in through pledges and onsite donations. All proceeds stay local to support patients and cancer care services.

Champions Fitness Club has new equipment to target your lower back, hamstrings and glutes. The new Rogue Reverse Hyper-Extension can be found in the Cross-Training Room.

Maine State Chamber of Commerce has named Patrick Woodcock as president and CEO effective Oct. 2nd. Congratulations!

Central Maine Power has received \$30M from the Department of Energy to install 300 automated devices that will help improve electrical system visibility for grid operators, allowing for a quick rebalancing of the electrical system with autonomous controls using data analytics, software and sensors intended to help reduce the frequency and impact of power outages following storms. CMP has been hardening its network – installing thicker wire and higher poles and trimming trees more aggressively – as part of a 10-yr. plan to improve reliability.

Skowhegan Savings Foundation has announced a \$1M multi-yr. fund dedicated to addressing workforce development needs in the ME communities that **Skowhegan Savings Bank** serves. Over the next 5 yrs., the workforce development fund will be awarding grants in partnership with nonprofit orgs., local gov. leaders, business leaders and education programs to address trade, technical and modern educational needs.

FMI: landing.skowhegan.com/foundation-workforce-development



Brought to you by Mid-Maine Chamber of Commerce

For current updates and information on the Waterville Winslow Ticonic Bridge project visit www.maine.gov/mdot/projects/waterville/ticonicbridge



Mid-Maine Chamber of Commerce is proud to maintain an A+ rating with the Better Business Bureau.

CHAMBER BOARDROOM RENTAL Includes Coffee Service

4 hours (1/2 day) –
Member Rate: \$75
Non-Member Rate: \$105
Full Day –
Member Rate: \$125
Non-Member Rate: \$155
Call Debbie at 873-3315 to book!

CHAMBER ENERGY SOLAR OFFSET

12 TREES SAVED
IN OCTOBER

Sponsorships are available in our InTouch Newsletter – a great place to showcase your business.

Small block (2.5" wide by 1.25" tall):
\$495/year

Large block (2.5" wide by 2.5" tall):
\$645/year

If interested contact
bridget@midmainechamber.com



6 Jefferson St., Waterville ME
(207) 873-6228

KNOWLESMECHANICAL.COM

(207) 445-4092

KNOWLES
MECHANICAL INC.

Commercial & Residential
Plumbing * Heating * Ventilation
A/C * Refrigeration * Core Boring
Metal Fab * Sales and Service
Installs, Maintenance and
24 Hour Energy Service

People News

Central Maine Growth Council, a public-private economic development group in Waterville, has appointed Nicole Timmins as its grant and finance manager. Welcome aboard, Nikki!

Congratulations to Darlene Ratte for 35 years at **Kennebec Valley Community College**.

Children's Discovery Museum welcomes its newest team member, Emily Bessey as its Museum Engagement Coordinator.

Maine International Trade Center welcomes Dan Berger as the new Director of Maine North Atlantic Development Office.

Redington- Fairview General Hospital is pleased to welcome Surgeon Rachael Amador, DO to its general surgery practice.

Anthony W. Buxton of **Preti Flaherty** has been selected for recognition by Super Lawyers as a 2023 New England Super Lawyer. Only 5% of eligible attorneys are chosen through a selection process that involves peer nominations/evaluations as well as independent research performed by Law & Politics, a media publisher specializing in the legal industry. Outstanding!

The **Maine Association of Nonprofits** Board of Directors is pleased to announce the appointment of Shirar Patterson as the organization's next board president. Patterson succeeds Marcia Sharp, a philanthropic consultant, who completed her leadership term and remains on the board. Additionally, **MANP's** board of directors elected three new board members: Meredith Anderson, Community Outreach Director at Southern Maine Agency on Aging; Dr. Laura K. Lee, Vice President of Community Impact at the Maine Community Foundation; and Dr. Miyabi "Abbie" Yamamoto, executive director at Portland Adult Education.

Pouliot Real Estate in Augusta announces 3 Realtors to its team: Kyle Dennis, Matt Harrington and Haley Jackson. Welcome!

HospitalityMaine's CHEF of the YEAR is Jesse Souza of **Lockwood Hotel** and Front & Main! Well deserved.

What's New at the Chamber

Welcome Jennifer Pepe as the new Director of Marketing & Membership



Mid-Maine Chamber of Commerce welcomes Jennifer Pepe as its new Marketing and Membership director. Jennifer will be replacing Bridget Campbell in this position, who is semi-retired but will still be working with the chamber on special projects as needed.

Included in her new duties as Marketing and Membership director will be marketing and communications of the numerous programs and events for the chamber as well as procuring new membership.

Please join us in welcoming her to the local business community and the chamber.

The Mid-Maine Chamber website gets a facelift



After months of planning and preparing, the Mid-Maine Chamber of Commerce launched an updated website which is still in line with the chambers mission to promote, educate and advocate for business prosperity and regional economic improvement.

The new website features a cleaner look, with the similar information to the previous website, yet we hope you will find it easier to navigate.

Log in and take a few moments to familiarize yourself with the new layout and function, and let us know what you think.

You can use your old log in, and say forgot password to reset. Then continue to be able to update your business page information, post jobs, events, member news and hot deals.

If you need further help reach out to Jennifer Pepe at the chamber office at 873-3341 or email Jennifer@midmainechamber.com.

VIDEO PRODUCTION SERVICES

Crossroads-TV
Where Knowledge Connects

Services Include

Broadcasting, Livestreams, Product or Business Promotions
+HYBRID LIVESTREAM WITH ZOOM INTERFACE+
Interviews, Special Announcements, Instructional Videos

crossroads-tv.com

PRIME FINANCIAL, INC.
Financial Services & Insurance

753 West River Rd.
PO Box 59
Waterville, ME 04903-0059
roland@primefinancial.biz
Phone (207) 877-9450
(800) 877-9450
Fax (207) 877-8876

Roland Fournier
CERTIFIED FINANCIAL PLANNER™ PROFESSIONAL
ChFC, CLU, CMFC, MSFS, CASL, REBC

Securities and Advisory Services offered through LPL Financial, a registered Investment Advisor

Member **FINRA/SIPC**
CFPs Professional, ChFC, CLU, CMFC, MSFS, CASL, REBC

MAINE TECHNOLOGY GROUP

Experience IT Differently!

CLOUD SOLUTIONS
BUSINESS SOLUTIONS
MANAGED IT SERVICES
CARRIER SERVICES

120 Augusta Rd • Winslow, ME
(207) 692-0955
www.mainetechgroup.com

A great time was had by all at the October Business After Hours hosted by Bangor Savings and Childrens' Discovery Museum



Attention Shoppers

Saturday, November 25, 2023, is Small Business Saturday and what a great time to support our local small business owners. Shoppers are encouraged to think locally and shop locally. We are hoping your shopping experience will last into the early evening so that you can stay on Main Street and enjoy the Parade of Lights.



This makes for a great time to shop, stay in town for a bite to eat, and then enjoy the parade. Please remember there are many small businesses in central Maine that reach beyond Main Street and could also use our support. These small business owners give so much back to our community, and could use the added boost on November 25, 2023, to kick off the holiday season. Once again, this year, the Mid-Maine Chamber of Commerce will be providing reusable shopping bags and local discount coupons. Visit their website www.midmainechamber.com for more information on the day's events and participating businesses and to enter your chance to win a \$100 Mid-Maine Chamber gift certificate.



NOVEMBER '23 SPEAKER SERIES:
SUSTAINE - HELPING UNCOVER PATHWAYS TO SMARTER, MORE SUSTAINABLE ENERGY CHOICES
Thursday, November 9 | 5:30 - 6:30 p.m.
Bricks Coworking and Innovation Space
10 Water Street, Suite 110, Waterville

Are you curious about optimizing your energy solutions?



Learn how Sustaine's experts guide you through the process, ensuring you access the best energy solutions through competitive bids from qualified providers.

This event is free, thanks to the Harold Alfond Institute for Business Innovation at Thomas College.

Register on Eventbrite.

FMI: www.centralmaine.org or www.dirigolabs.org

Sponsored by:

Beverage Sponsor:



Harold Alfond® Institute for Business Innovation



KENNEBEC VALLEY COMMUNITY COLLEGE
YOUR BRIDGE TO A BRIGHTER FUTURE

For more information visit kvcc.me.edu

NEW LOOK — SAME GREAT EDUCATION

Office Cleaning
Customized to Meet Your Needs!
Daily, Weekly, Or Monthly

- Window Washing
- Dusting
- Bathroom Cleaning
- Vacuuming
- Sweeping / Mopping Floors

207-873-1241 ~ www.advance1clean.com

SILVER STREET Tavern
2 Silver Street, Waterville ME

Sponsorships are available in our InTouch Newsletter — a great place to showcase your business.

Small block (2.5" wide by 1.25" tall): \$495/year

Large block (2.5" wide by 2.5" tall): \$645/year

If interested contact bridget@midmainechamber.com

Member Spotlight: Sheridan Construction

Sheridan's commitment to developing Maine continues much further than just building

After making the move to central Maine in 1958 from Aroostook County, Sheridan Construction has spent the last 65 years in the Greater Waterville area, so the company could be centrally located in the state.

Over the course of the last year, Sheridan had the pleasure of being named the "2022 East Region Builder of the Year" by Butler Manufacturing. This award featured stiff competition throughout the eastern United States, Canada, and Puerto Rico, featuring 275 unique builders. Sheridan has also been fortunate enough to be selected as one of the Best Places to Work in Maine in 2023.

With roughly 100 employees, Sheridan Construction has also been at the forefront of progression throughout the entire state of Maine. Featuring projects in Machias, Saco, Farmington, and Greenville. Sheridan's commitment to developing Maine continues much further than just building. Sheridan is dedicated to developing excellent employees who provide engineering services, trade skills and effective business management principles. Additionally,



Sheridan Construction

Sheridan is committed to supporting the advancement of education and experience of the youth in our communities, by recently partnering with local trade schools to provide both educational and professional opportunities to the youth in our communities.

Sheridan would like to thank the Mid-Maine Chamber of Commerce, and all affiliates for their loyalty and dedication to bettering our surrounding communities. Our success over the last 65 years could not happen without the commitment and collaboration of each and every member of the Mid-Maine Chamber of Commerce.



PHARMACY
SAVAGES DRUG

FAIRFIELD PHARMACY 207-413-4411
OAKLAND PHARMACY 207-461-4442
UNITY PHARMACY 207-616-0709



**BUDDIES
GROCERIES**

IGA

207-465-2621
43 Main Street • Oakland

SavagesDrug.com

Workplace Health MaineGeneral Medical Center

- Injury treatment & management
- Employee wellness
- Drug & alcohol testing
- DOT physicals

Augusta — 621-7550 Waterville — 872-4260

Visit us at workplacehealth.maine-general.org.



Quality and Value
Since 1912

www.hamelinfurniturecompany.com

Hamelin Furniture Co.
CORNER WESTERN AVE. & SOUTH ST. WATERVILLE, MAINE
872-8433

Fuel Loan Special

7.75% APR*

Up to 12 months

This is a great way to plan financially for the upcoming winter while your oil/propane company is rolling out its budget plans and pre-buy offers.

Fuel loan can be for oil, propane, pellets, or even firewood)

Waterville • Winslow • Skowhegan
newdimensionsfcu.com
(800) 326-6190

*Annual Percentage Rate; Rate subject to change without notice; membership eligibility required. Payment \$20.16 per \$1,000 borrowed. Subject to underwriting guidelines. Certain restrictions apply

Christmas Loan Special

7.99% APR*
Up to
12-month term

New
Dimensions
Federal Credit Union

Educate. Empower. Evolve.

* Annual Percentage Rate;
Membership eligibility required; Rate
discounts do not apply; Subject to
unsecured limits.

Underwriting guidelines apply.

Available until 01/31/2024.

Payment would be \$88.98 per \$1,000
borrowed.

Waterville • Winslow • Skowhegan
(800) 326-6190 • newdimensionsfcu.com



**Don Plourde - Coldwell Banker
Plourde Real Estate**

**Our next
Leadership Luncheon will be held**

**Wednesday, November 29 –
11:30 a.m. to 1 p.m.**

Amici's Cucina, 137 Main St., Waterville

Join us for a delicious lunch and presentation with Don Plourde, Broker and Co-Owner of Coldwell Banker Plourde Real Estate since 1989.

Don currently serves as a board member of the Central Maine Growth Council and is Director on the Board of the Maine Commercial Association of Realtors. He is also a past Chairman of the Maine Real Estate.

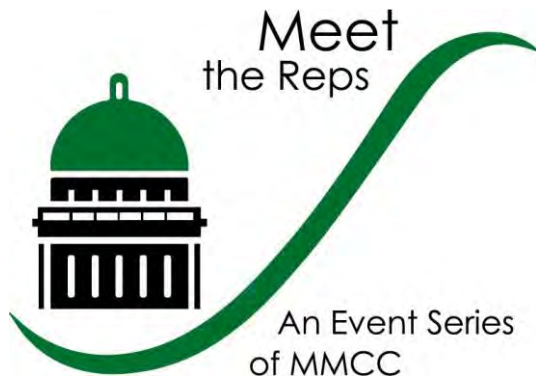
Don has been heavily involved in residential and commercial real estate and in developing new real estate projects in the area. Don will share his leadership journey, both challenges and successes, from his days growing up in Central Maine to where he is today.

**Register today! \$25 for Chamber members;
\$30 for non-members or at the door.**

Registration includes lunch.

Thank you to our 2023 Leadership Luncheon Sponsors:





Presented
by:



We invite you to join us
for

MEET THE REPS

Thursday, December 7, 2023

5:30-7:00 p.m.

Hampton Inn

425 Kennedy Memorial Drive,
Waterville

Don't miss out! This is your opportunity to meet and ask questions of your State and local representatives and hear about important legislative updates.



For more information visit: www.midmainechamber.com.

This event is proudly sponsored by:



Business Breakfast Series

brought to you by
Mid-Maine Chamber of Commerce



TOPIC: The Nature of Conflict: Conflict Resolution in the Workplace”



Terri Swanson

When: Thursday, November 2, 7:15 - 9:00 a.m.

Where: Best Western Plus, 375 Main St., Waterville

Terri Swanson of Swanson Consulting & Associates, LLC will discuss conflicts in organizations, recognizing that conflict in and of itself is not a bad thing. It is the diversity which people bring to the situation that affects the outcome.

Terri Swanson, Human Resources Consultant, has served as Director of Human Resources at Witham Family Hotels for 8 years, and Director of Volunteer Services and Maine Coast Lifeline departments at Maine Coast Memorial Hospital for 10 years. She is a long-standing member of SHRM and serves as a board member for Northeastern Workforce Development Board.

Terri has extensive experience cultivating a healthy company culture and developing employee engagement and morale in the workplace. Please join us to learn more about how to manage conflict in your organization and to enhance your team. Come prepared with your questions and take this opportunity to network with other business leaders.

Thanks to our additional November sponsor:

Check out our November spotlighter booth, New Dimensions FCU and hear from our Entrepreneurial Spotlighter, Balfour Farms.



Pre-register today: cost per person: \$23 members; \$29 at the door and non-members.

TO REGISTER: email cindy@midmainechamber.com or call 873-3315.

Thank you to our Annual Major Sponsors:



Print Media Sponsor



Radio Sponsor



Video Sponsor



CHAMBER MEMBERSHIP REFRESHER and NEW MEMBER ORIENTATION



Are you taking full advantage of your Chamber membership?

How can you *engage* with the Chamber and
help us help you *grow* your business?

Discover ways to get the best value for your Chamber membership by
attending this event. Perfect for new and existing members.

Let us show you how to make your membership work for you!

~ *FREE* to all new and current Chamber members ~

Thursday ~ November 2, 2023

3:30—5 p.m.

Zoom and in-person formats are offered, though in-person attendance is
encouraged.

Once you register, you will receive the link for the meeting.

In-Person:

Mid-Maine Chamber of Commerce ~ 50 Elm St., Waterville—873-3315

Happy hour drinks and light appetizers will be provided for in-person attendees.

Please call/email Deborah Hellman to confirm for food count-deborah
@midmainechamber.com.

This event is proudly sponsored by: **MaineGeneral Health**





Presented by
Central Maine Community Betterment Collaborative
In Conjunction With
Alfond Youth & Community Center and
Mid-Maine Chamber of Commerce



NOVEMBER 17-19 & 24-26

**NEW LOCATION: Waterville Elks Lodge #905
76 Industrial Street, Waterville, ME**

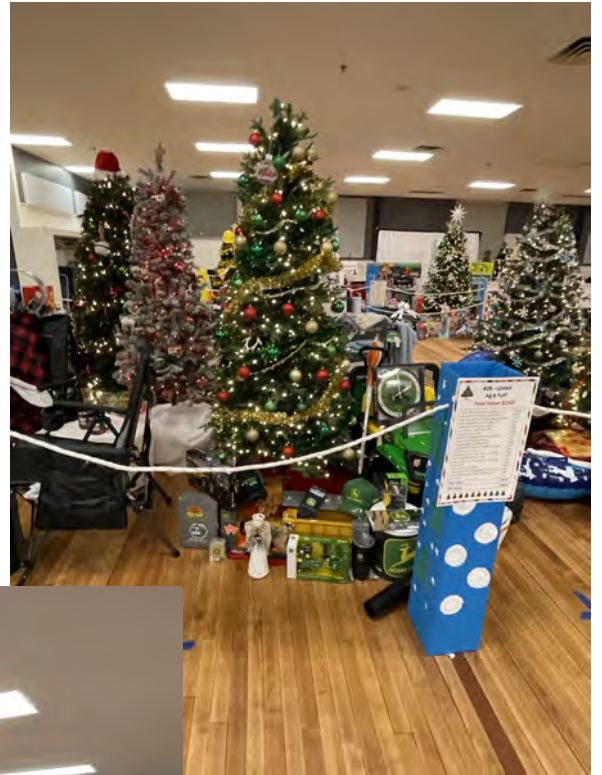
**\$2 Admission • 12 and Under - Free
50¢ Per Tree Entry Ticket and Daily 50/50**

FESTIVAL DATES AND HOURS:

- **Friday, November 17 • 10 a.m. – 7 p.m.**
- **Saturday, November 18 • 10 a.m. – 7 p.m.**
- **Sunday, November 19 • 10 a.m. – 5 p.m.**
- **Friday, November 24 • 10 a.m. – 7 p.m.**
- **Saturday, November 25 • 10 a.m. – 7 p.m.**
- **Sunday, November 26 • 10 a.m. – 4 p.m.**

**TREE WINNERS WILL BE DRAWN AT 5 P.M. SUNDAY,
NOVEMBER 26 AND 50/50 WINNERS DRAWN EVERY
DAY. YOU DO NOT NEED TO BE PRESENT TO WIN!**

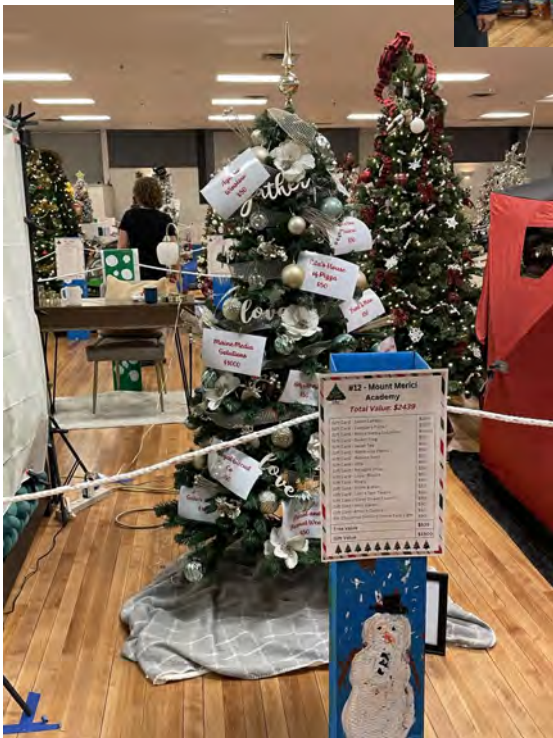
**For more information or to volunteer, go to
www.festivaloftreesmaine.net.**



Save the date for
a day of family
fun!



Take home
thousands with
our giant daily
50/50 payouts!



Annual Awards Ceremony



An Event
of MMCC

Do you know someone who serves the area unselfishly? Do you wish they could receive appropriate recognition? Here is your opportunity!

For 61 years, the Mid-Maine Chamber of Commerce has given prestigious awards to deserving and distinguished area businesses and professionals.

Please take the time to review the selection criteria below.

***All nominees must be Chamber members in good standing except for the Distinguished Community Service award. ***

DISTINGUISHED COMMUNITY SERVICE AWARD

The nominee must have:

- ◆ Been involved with the betterment of the community for at least ten years.
- ◆ Demonstrated community leadership.
- ◆ Initiated creativity with no fewer than three (3) different areas of community service.
- ◆ Demonstrated unselfishness towards the economic betterment of the mid-Maine area.

Attach additional pages to explain why this person is deserving of this award.

BUSINESS OF THE YEAR – Two Awards: Small and Large Business

Small Business of the Year: Less than 50 employees

Large Business of the Year: Over 50 employees

Mid-Maine Chamber of Commerce Business of the Year Award is given to an area business that:

- ◆ Exemplifies commitment to growth within the community through an expansion of workforce, major renovations and/or foresight.
- ◆ Contributed to the overall well-being of the community.

Attach additional pages to explain why this person is deserving of this award.

OUTSTANDING PROFESSIONAL

To nominate a person for the outstanding professional award, the nominee must:

- ◆ Demonstrate leadership and excellence in their profession.
- ◆ Give back in support to the community.

Attach additional pages to explain why this person is deserving of this award.

MUNICIPAL EMPLOYEE OF THE YEAR

Mid-Maine Chamber of Commerce Municipal Employee of the Year Award is given to an employee of a Chamber-area municipality who:

- ◆ Displays leadership in supporting the positive direction of his/her/its municipality.
- ◆ Goes above and beyond in his/her assignment or in project fulfillment, making a difference in the community.
- ◆ Demonstrates positive support of business initiatives.

Attach additional pages to explain why this person is deserving of this award.

EXCEPTIONAL VOLUNTEER OF THE YEAR

Nominees in this category must:

- ◆ Be a volunteer with at least one Chamber member organization.
- ◆ Exemplify service above self through in support of the organization's mission and the community.

Attach additional pages to explain why this person is deserving of this award.

RISING STAR AWARD

The Rising Star recipient must:

- ◆ Be under the age of 40.
- ◆ Be in management or other leadership capacity within the business organization.
- ◆ Illustrate a combination of business success and community involvement.

Attach additional pages to explain why this person is deserving of this award.

CUSTOMER SERVICE STARDOM AWARD

Nominees in this category must:

- ◆ Illustrate pride in his/her job.
- ◆ Demonstrate examples of exceptional customer service.
- ◆ Not be a business owner or a member of top management.

Attach additional pages to explain why this person is deserving of this award.

ELIAS A. JOSEPH AWARD

“In honor of Elias A. Joseph, for dedication of over 28 years of volunteer and loyal service to the Mid-Maine Chamber of Commerce and for professional achievement and unselfish devotion to his community, effectively developing, coordinating and supervising programs and projects that greatly enhanced all the people of mid-Maine for over a quarter of a century, and acknowledging his exceptional initiative, that includes over 10,000 hours of volunteer service to this Chamber of Commerce, we of the Mid-Maine Chamber of Commerce Board of Directors hereby proclaim and declare that henceforth the *Elias A. Joseph Award* shall be awarded to those most worthy to bear the name and having displayed similar service to the Mid-Maine Chamber of Commerce.”

Attach additional pages to explain why this person is deserving of this award.

To submit a nomination, please respond by mail, fax or email to the Mid-Maine Chamber office
by December 1, 2023 to:

Mid-Maine Chamber of Commerce
Annual Awards Nomination
50 Elm Street, Waterville, ME 04901

P: (207) 873 - 3315 | F: (207) 877 - 0087 | E: Cindy@midmainechamber.com

Remember to review the criteria for each category, and provide your nominee's name and reason for nomination for the category. We look forward to receiving your response by December 1, 2023.

Please join us for our Annual Awards Ceremony in April 2024.